

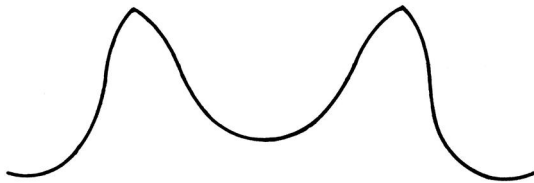


## Doppler Gear TechBit: Sprockets

A sprocket is a toothed wheel that meshes with any perforated, indented, or linked material. They can be used to transfer motion of paper, film, tracks, and chains. Two of the most common profiles are **roller chain** sprockets and **silent chain** sprockets.

### Roller Chain Sprockets

Can often be identified by the shape of the tooth and by measuring the chain that it mates with.

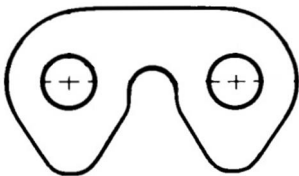


**ASME/ANSI B29.1M**  
Precision Power Transmission Roller Chains, Attachments, and Sprockets

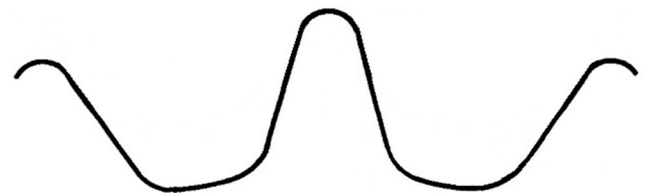
Standard Chain No.	Pitch (center to center of a link)	Diameter (of a chain roll)
25	0.250"	Ø0.130"
35	0.375"	Ø0.200"
41	0.500"	Ø0.306"
40	0.500"	Ø0.312"
50	0.625"	Ø0.400"
60	0.750"	Ø0.469"
80	1.000"	Ø0.625"
100	1.250"	Ø0.750"
120	1.500"	Ø0.875"
140	1.750"	Ø1.000"
160	2.000"	Ø1.125"

### Inverted Tooth (Silent) Chain Sprockets

were developed to provide efficient, smooth, quiet drives at higher speeds. Silent chain is composed of a series of flat plates hinged together.



Standard Chain No.	Pitch (center to center of a link)
SC3	0.375"
SC4	0.500"
SC5	0.625"
SC6	0.750"
SC8	1.000"
SC10	1.250"
SC12	1.500"
SC16	2.000"



**ASME/ANSI B29.2M**  
Inverted Tooth (Silent) Chains and Sprockets

**HY-VO** or **HV** chains and sprockets are similar to Silent Chain but have modified forms to improve performance and **should not** be interchanged with SC components.



2715 - 29th Ave S  
Minneapolis, MN 55406  
[SALES@dopplergear.com](mailto:SALES@dopplergear.com)  
[www.dopplergear.com](http://www.dopplergear.com)  
Ph: (612) 729-8301